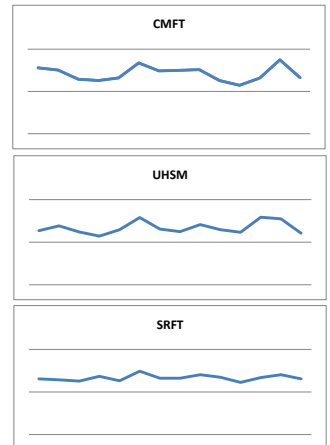


## CONTENTS

Daily A&E Attendances by Provider Site (4 Hour Target) All Activity	1
Daily A&E Breaches by Provider Site (4 Hour Target)	
Daily A&E Performance by Provider Site (4 Hour Target)	
A&E Attendances - Trafford CCG Activity as a % of Total Activity	2
Urgent Care Admissions - Trafford CCG Activity as a % of Total Activity	
A&E Attendances - Trafford CCG - Comparison Against Planned Activity	3
Urgent Care Admissions - Trafford CCG - Comparison Against Planned Activity	4

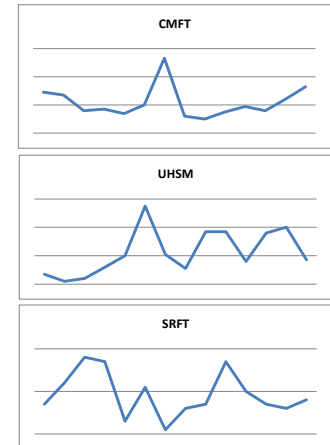
Daily A&E Attendances by Provider Site (4 Hour Target) All Activity

2 Weeks Data		From: 12/03/2014					To: 25/03/2014							
Site	12/03/2014	13/03/2014	14/03/2014	15/03/2014	16/03/2014	17/03/2014	18/03/2014	19/03/2014	20/03/2014	21/03/2014	22/03/2014	23/03/2014	24/03/2014	25/03/2014
rw3t1	69	55	61	49	34	69	67	63	54	56	45	49	72	56
rw3rc	146	155	137	124	151	151	120	134	150	130	126	126	166	108
rw3dh	10	10	6	0	0	13	11	11	11	9	0	0	12	16
rw3re	79	62	68	59	35	71	64	72	69	67	55	61	83	70
rw3mr	374	368	250	285	348	417	369	351	344	266	268	349	403	312
rw3sm	23	39	46	39	22	43	34	33	38	34	22	20	43	25
rw3tr	78	63	77	74	69	73	78	85	91	68	56	53	93	74
<b>CMFT</b>	<b>779</b>	<b>752</b>	<b>645</b>	<b>630</b>	<b>659</b>	<b>837</b>	<b>743</b>	<b>749</b>	<b>757</b>	<b>630</b>	<b>572</b>	<b>658</b>	<b>872</b>	<b>661</b>
rm203	254	276	248	228	258	316	262	249	283	258	247	317	309	242
<b>UHSM</b>	<b>254</b>	<b>276</b>	<b>248</b>	<b>228</b>	<b>258</b>	<b>316</b>	<b>262</b>	<b>249</b>	<b>283</b>	<b>258</b>	<b>247</b>	<b>317</b>	<b>309</b>	<b>242</b>
rm301	261	257	251	274	253	298	265	264	281	269	245	267	281	262
<b>SRFT</b>	<b>261</b>	<b>257</b>	<b>251</b>	<b>274</b>	<b>253</b>	<b>298</b>	<b>265</b>	<b>264</b>	<b>281</b>	<b>269</b>	<b>245</b>	<b>267</b>	<b>281</b>	<b>262</b>
<b>Total</b>	<b>1294</b>	<b>1285</b>	<b>1144</b>	<b>1132</b>	<b>1170</b>	<b>1451</b>	<b>1270</b>	<b>1262</b>	<b>1321</b>	<b>1157</b>	<b>1064</b>	<b>1242</b>	<b>1462</b>	<b>1165</b>



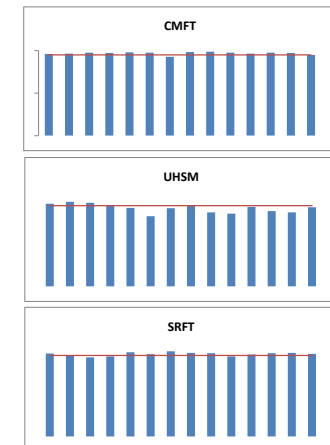
Daily A&E Breaches by Provider Site (4 Hour Target)

Site	12/03/2014	13/03/2014	14/03/2014	15/03/2014	16/03/2014	17/03/2014	18/03/2014	19/03/2014	20/03/2014	21/03/2014	22/03/2014	23/03/2014	24/03/2014	25/03/2014
rw3t1	0	0	0	0	0	0	0	0	0	0	0	0	0	0
rw3rc	5	9	4	1	5	0	2	2	4	4	4	2	5	3
rw3dh	0	0	0	0	0	0	0	0	0	0	0	0	0	0
rw3re	0	0	0	0	0	0	0	0	0	0	0	0	0	0
rw3mr	24	18	12	16	8	20	51	9	6	11	15	13	19	30
rw3sm	0	0	0	0	0	0	0	0	0	0	0	0	0	0
rw3tr	0	0	0	0	1	0	0	1	0	0	0	1	0	0
<b>CMFT</b>	<b>29</b>	<b>27</b>	<b>16</b>	<b>17</b>	<b>14</b>	<b>20</b>	<b>53</b>	<b>12</b>	<b>10</b>	<b>15</b>	<b>19</b>	<b>16</b>	<b>24</b>	<b>33</b>
rm203	7	2	4	12	20	55	21	11	37	37	16	36	40	17
<b>UHSM</b>	<b>7</b>	<b>2</b>	<b>4</b>	<b>12</b>	<b>20</b>	<b>55</b>	<b>21</b>	<b>11</b>	<b>37</b>	<b>37</b>	<b>16</b>	<b>36</b>	<b>40</b>	<b>17</b>
rm301	7	12	18	17	3	11	1	6	7	17	10	7	6	8
<b>SRFT</b>	<b>7</b>	<b>12</b>	<b>18</b>	<b>17</b>	<b>3</b>	<b>11</b>	<b>1</b>	<b>6</b>	<b>7</b>	<b>17</b>	<b>10</b>	<b>7</b>	<b>6</b>	<b>8</b>
<b>Total</b>	<b>43</b>	<b>41</b>	<b>38</b>	<b>46</b>	<b>37</b>	<b>86</b>	<b>75</b>	<b>29</b>	<b>54</b>	<b>69</b>	<b>45</b>	<b>59</b>	<b>70</b>	<b>58</b>



Daily A&E Performance by Provider Site (4 Hour Target)

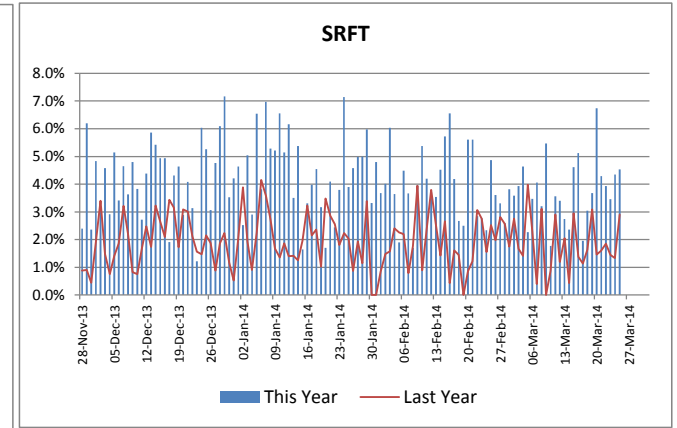
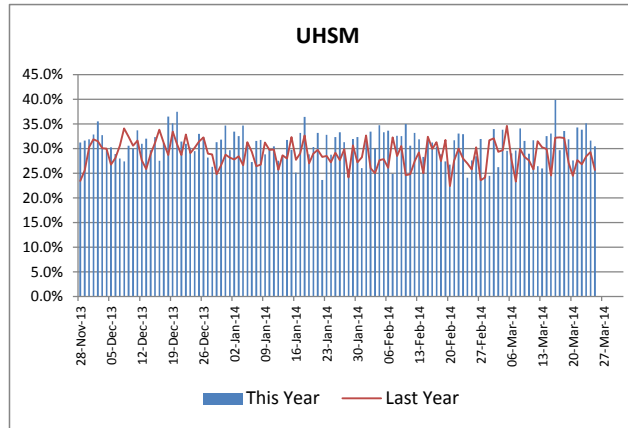
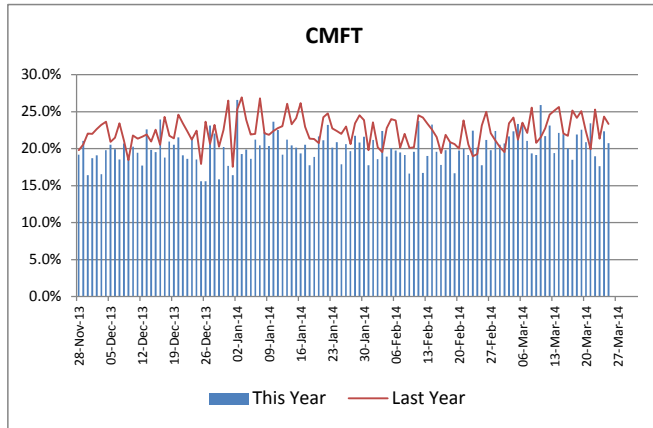
Site	12/03/2014	13/03/2014	14/03/2014	15/03/2014	16/03/2014	17/03/2014	18/03/2014	19/03/2014	20/03/2014	21/03/2014	22/03/2014	23/03/2014	24/03/2014	25/03/2014
rw3t1	100.0%	100.0%	100.0%	100.0%	100.0%	100.0%	100.0%	100.0%	100.0%	100.0%	100.0%	100.0%	100.0%	100.0%
rw3rc	96.6%	94.2%	97.1%	99.2%	96.7%	100.0%	98.3%	98.5%	97.3%	96.9%	96.8%	98.4%	97.0%	97.2%
rw3dh	100.0%	100.0%	100.0%			100.0%	100.0%	100.0%	100.0%	100.0%			100.0%	100.0%
rw3re	100.0%	100.0%	100.0%	100.0%	100.0%	100.0%	100.0%	100.0%	100.0%	100.0%	100.0%	100.0%	100.0%	100.0%
rw3mr	93.6%	95.1%	95.2%	94.4%	97.7%	95.2%	86.2%	97.4%	98.3%	95.9%	94.4%	96.3%	95.3%	90.4%
rw3sm	100.0%	100.0%	100.0%	100.0%	100.0%	100.0%	100.0%	100.0%	100.0%	100.0%	100.0%	100.0%	100.0%	100.0%
rw3tr	100.0%	100.0%	100.0%	100.0%	98.6%	100.0%	100.0%	98.8%	100.0%	100.0%	100.0%	98.1%	100.0%	100.0%
<b>CMFT</b>	<b>96.3%</b>	<b>96.4%</b>	<b>97.5%</b>	<b>97.3%</b>	<b>97.9%</b>	<b>97.6%</b>	<b>92.9%</b>	<b>98.4%</b>	<b>98.7%</b>	<b>97.6%</b>	<b>96.7%</b>	<b>97.6%</b>	<b>97.2%</b>	<b>95.0%</b>
rm203	97.2%	99.3%	98.4%	94.7%	92.2%	82.6%	92.0%	95.6%	86.9%	85.7%	93.5%	88.6%	87.1%	93.0%
<b>UHSM</b>	<b>97.2%</b>	<b>99.3%</b>	<b>98.4%</b>	<b>94.7%</b>	<b>92.2%</b>	<b>82.6%</b>	<b>92.0%</b>	<b>95.6%</b>	<b>86.9%</b>	<b>85.7%</b>	<b>93.5%</b>	<b>88.6%</b>	<b>87.1%</b>	<b>93.0%</b>
rm301	97.3%	95.3%	92.8%	93.8%	98.8%	96.3%	99.6%	97.7%	97.5%	93.7%	95.9%	97.4%	97.9%	96.9%
<b>SRFT</b>	<b>97.3%</b>	<b>95.3%</b>	<b>92.8%</b>	<b>93.8%</b>	<b>98.8%</b>	<b>96.3%</b>	<b>99.6%</b>	<b>97.7%</b>	<b>97.5%</b>	<b>93.7%</b>	<b>95.9%</b>	<b>97.4%</b>	<b>97.9%</b>	<b>96.9%</b>
<b>Total</b>	<b>96.7%</b>	<b>96.8%</b>	<b>96.7%</b>	<b>95.9%</b>	<b>96.8%</b>	<b>94.1%</b>	<b>94.1%</b>	<b>97.7%</b>	<b>95.9%</b>	<b>94.0%</b>	<b>95.8%</b>	<b>95.2%</b>	<b>95.2%</b>	<b>95.0%</b>



Activity represents all A&E attendances (patients of any CCG) at each Provider  
National operational standard: 95% of patients seen and discharged within 4 hours of attendance.

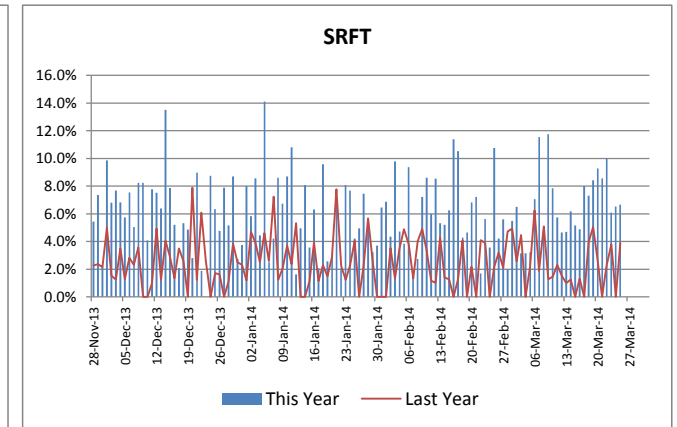
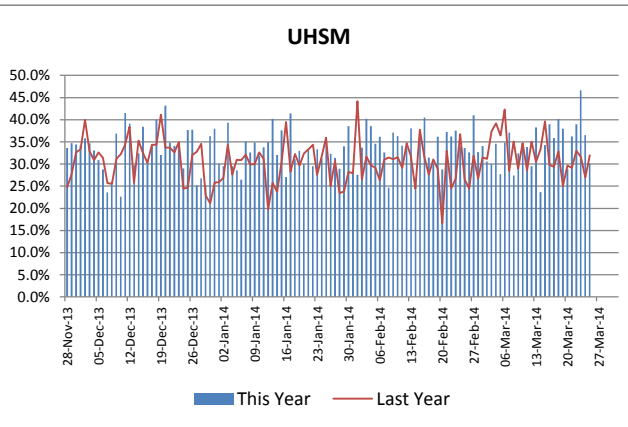
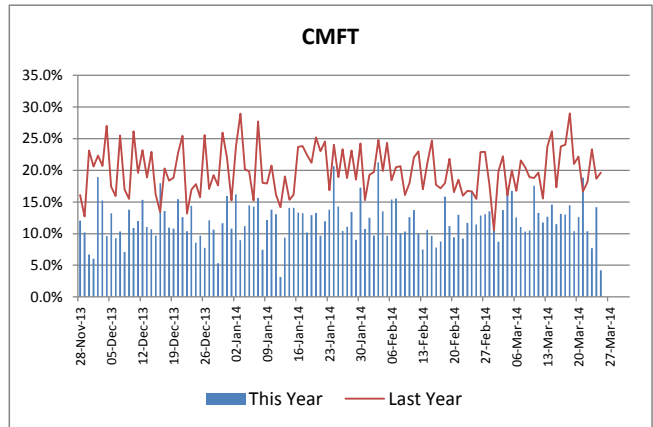
## A&E Attendances - Trafford CCG Activity as a % of Total Activity

From: 28/11/2013 To: 25/03/2014



## Urgent Care Admissions - Trafford CCG Activity as a % of Total Activity

From: 28/11/2013 To: 25/03/2014



## Monitoring Dashboard 2013/14

### A&E Attendances - Trafford CCG - Comparison Against Planned Activity

CMFT		Plan	Since 28/11/13					Last 2 Weeks			From: 12/03/2014 To: 25/03/2014																												
Time and Arrival Mode		Extra Per Day After NHDT	Last Year	Expected	This Year	Var. from Expected	% Var. from Expected	Last Year	Expected	This Year	Expected Activity														Actual Activity														
											12/03/2014	13/03/2014	14/03/2014	15/03/2014	16/03/2014	17/03/2014	18/03/2014	19/03/2014	20/03/2014	21/03/2014	22/03/2014	23/03/2014	24/03/2014	25/03/2014	12/03/2014	13/03/2014	14/03/2014	15/03/2014	16/03/2014	17/03/2014	18/03/2014	19/03/2014	20/03/2014	21/03/2014	22/03/2014	23/03/2014	24/03/2014	25/03/2014	
2	00:00 to 07:59 Brought in by Ambulance	-5.9	662	-28	314	342		92	22	40	2	4	1	0	0	5	2	0	0	0	0	0	1	4	2	1	4	3	4	8	0	3	1	0	4	5	2	2	3
3	00:00 to 07:59 Other	-7.1	870	39	369	330	839%	121	33	44	7	2	2	0	4	7	0	6	0	0	0	0	0	6	0	9	1	1	5	4	3	4	2	4	2	3	1	3	2
4	08:00 to 23:59 Brought in by Ambulance	-4.6	2345	1807	1415	-392	-22%	297	233	142	17	20	17	10	16	14	21	20	13	19	20	19	8	13	6	8	9	8	16	14	10	8	12	12	9	11	14	5	
5	08:00 to 23:59 Other	-5	15221	14636	14234	-402	-3%	1949	1879	1924	145	154	155	141	113	125	173	154	133	108	124	92	111	151	164	133	145	136	104	138	146	158	142	146	105	102	176	129	
<b>Total</b>		<b>-22.6</b>	<b>19098</b>	<b>16454</b>	<b>16332</b>	<b>-122</b>	<b>-1%</b>	<b>2459</b>	<b>2167</b>	<b>2150</b>	<b>171</b>	<b>180</b>	<b>175</b>	<b>151</b>	<b>133</b>	<b>151</b>	<b>197</b>	<b>180</b>	<b>146</b>	<b>127</b>	<b>144</b>	<b>113</b>	<b>129</b>	<b>167</b>	<b>180</b>	<b>146</b>	<b>158</b>	<b>153</b>	<b>132</b>	<b>155</b>	<b>163</b>	<b>169</b>	<b>158</b>	<b>164</b>	<b>122</b>	<b>116</b>	<b>195</b>	<b>139</b>	

UHSM		Plan	Since 28/11/13					Last 2 Weeks			From: 12/03/2014 To: 25/03/2014																											
Time and Arrival Mode		Extra Per Day After NHDT	Last Year	Expected	This Year	Var. from Expected	% Var. from Expected	Last Year	Expected	This Year	Expected Activity														Actual Activity													
											12/03/2014	13/03/2014	14/03/2014	15/03/2014	16/03/2014	17/03/2014	18/03/2014	19/03/2014	20/03/2014	21/03/2014	22/03/2014	23/03/2014	24/03/2014	25/03/2014	12/03/2014	13/03/2014	14/03/2014	15/03/2014	16/03/2014	17/03/2014	18/03/2014	19/03/2014	20/03/2014	21/03/2014	22/03/2014	23/03/2014	24/03/2014	25/03/2014
2	00:00 to 07:59 Brought in by Ambulance	3.2	555	929	805	-124	-13%	69	114	94	8	7	11	6	7	11	6	5	6	10	8	7	14	5	2	7	3	5	14	6	10	7	7	7	11	7	5	3
3	00:00 to 07:59 Other	4.5	632	1159	665	-494	-43%	71	134	86	10	12	10	7	11	16	7	9	11	8	7	13	10	10	4	8	2	8	9	5	3	8	4	6	5	5	8	11
4	08:00 to 23:59 Brought in by Ambulance	2.5	1894	2187	2274	88	4%	230	265	257	22	22	22	16	23	15	18	25	18	19	15	22	16	19	14	19	24	16	17	12	22	14	15	23	19	26	24	12
5	08:00 to 23:59 Other	3.2	5594	5968	5370	-598	-10%	721	766	697	62	55	50	51	59	66	82	49	42	59	35	46	52	55	45	36	53	47	55	66	53	44	43	55	49	57	49	45
<b>Total</b>		<b>13.4</b>	<b>8675</b>	<b>10243</b>	<b>9114</b>	<b>-1129</b>	<b>-11%</b>	<b>1091</b>	<b>1279</b>	<b>1134</b>	<b>101</b>	<b>95</b>	<b>92</b>	<b>79</b>	<b>99</b>	<b>107</b>	<b>112</b>	<b>87</b>	<b>76</b>	<b>95</b>	<b>64</b>	<b>87</b>	<b>91</b>	<b>88</b>	<b>65</b>	<b>70</b>	<b>82</b>	<b>76</b>	<b>95</b>	<b>89</b>	<b>88</b>	<b>73</b>	<b>69</b>	<b>91</b>	<b>84</b>	<b>95</b>	<b>86</b>	<b>71</b>

SRFT		Plan	Since 28/11/13					Last 2 Weeks			From: 12/03/2014 To: 25/03/2014																											
Time and Arrival Mode		Extra Per Day After NHDT	Last Year	Expected	This Year	Var. from Expected	% Var. from Expected	Last Year	Expected	This Year	Expected Activity														Actual Activity													
											12/03/2014	13/03/2014	14/03/2014	15/03/2014	16/03/2014	17/03/2014	18/03/2014	19/03/2014	20/03/2014	21/03/2014	22/03/2014	23/03/2014	24/03/2014	25/03/2014	12/03/2014	13/03/2014	14/03/2014	15/03/2014	16/03/2014	17/03/2014	18/03/2014	19/03/2014	20/03/2014	21/03/2014	22/03/2014	23/03/2014	24/03/2014	25/03/2014
2	00:00 to 07:59 Brought in by Ambulance	2.7	47	363	201	-162	-45%	4	4	22	3	5	3	4	4	3	3	3	3	3	3	3	3	3	0	0	1	1	1	2	2	3	2	3	2	2	3	0
3	00:00 to 07:59 Other	2.6	29	333	105	-228	-68%	3	39	14	3	3	3	3	3	3	3	4	3	4	3	4	3	3	1	2	1	0	3	1	0	3	0	1	1	0	1	
4	08:00 to 23:59 Brought in by Ambulance	2.1	159	405	516	111	28%	17	46	68	3	3	2	3	3	2	5	7	2	3	3	3	2	4	5	2	3	10	7	2	3	7	7	5	2	4	8	
5	08:00 to 23:59 Other	1.8	296	507	384	-123	-24%	36	61	40	4	4	3	7	3	5	4	4	6	4	5	3	5	7	3	3	1	1	2	1	3	4	6	2	2	4	5	3
<b>Total</b>		<b>9.2</b>	<b>531</b>	<b>1607</b>	<b>1206</b>	<b>-401</b>	<b>-25%</b>	<b>60</b>	<b>151</b>	<b>144</b>	<b>12</b>	<b>14</b>	<b>10</b>	<b>16</b>	<b>12</b>	<b>12</b>	<b>14</b>	<b>17</b>	<b>13</b>	<b>13</b>	<b>13</b>	<b>12</b>	<b>12</b>	<b>16</b>	<b>9</b>	<b>7</b>	<b>6</b>	<b>12</b>	<b>13</b>	<b>6</b>	<b>8</b>	<b>10</b>	<b>18</b>	<b>12</b>	<b>10</b>	<b>9</b>	<b>12</b>	<b>12</b>
<b>Total</b>		<b>0</b>	<b>28304</b>	<b>28304</b>	<b>26652</b>	<b>-1652</b>	<b>-6%</b>	<b>3610</b>	<b>3610</b>	<b>3428</b>	<b>285</b>	<b>290</b>	<b>278</b>	<b>247</b>	<b>245</b>	<b>271</b>	<b>323</b>	<b>285</b>	<b>236</b>	<b>236</b>	<b>222</b>	<b>212</b>	<b>233</b>	<b>271</b>	<b>254</b>	<b>223</b>	<b>246</b>	<b>241</b>	<b>240</b>	<b>250</b>	<b>259</b>	<b>252</b>	<b>245</b>	<b>267</b>	<b>216</b>	<b>220</b>	<b>293</b>	<b>222</b>
																									<b>-31</b>	<b>-67</b>	<b>-32</b>	<b>-6</b>	<b>-5</b>	<b>-21</b>	<b>-64</b>	<b>-33</b>	<b>+9</b>	<b>+31</b>	<b>-6</b>	<b>+8</b>	<b>+60</b>	<b>-49</b>

Plan = The additional number of patients forecast to attend A&E on a daily basis after NHDT changes take place (28/11/2013)  
 Expected activity = An estimate of expected activity + additional planned activity  
 Actual activity = Actual numbers attending A&E  
 Note: Until NHDT changes take place Expected Activity will be the same as Actual Activity

## Monitoring Dashboard 2013/14

### Urgent Care Admissions - Trafford CCG - Comparison Against Planned Activity

#### CMFT

Time of Admission	Plan Extra Per Day After NHDT	Since 28/11/13					Last 2 Weeks			Expected Activity													
		Last Year	Expected	This Year	Var. from Expected	% Var. from Expected	Last Year	Expected	This Year	12/03/2014	13/03/2014	14/03/2014	15/03/2014	16/03/2014	17/03/2014	18/03/2014	19/03/2014	20/03/2014	21/03/2014	22/03/2014	23/03/2014	24/03/2014	25/03/2014
2 Admissions 00:00 to 07:59	-3.4	610	212	321	109	51%	87	40	32	4	6	5	1	3	2	4	5	4	2	0	3	5	1
3 Admissions 08:00 to 23:59	-4	2742	2274	1715	-559	-25%	356	300	218	10	26	27	19	25	23	38	25	22	16	14	18	13	24
<b>Total</b>	<b>-7.4</b>	<b>3352</b>	<b>2486</b>	<b>2036</b>	<b>-450</b>	<b>-18%</b>	<b>443</b>	<b>340</b>	<b>250</b>	<b>14</b>	<b>32</b>	<b>32</b>	<b>20</b>	<b>28</b>	<b>25</b>	<b>42</b>	<b>30</b>	<b>26</b>	<b>18</b>	<b>14</b>	<b>21</b>	<b>18</b>	<b>25</b>

4.3 Direct Transfers

From: 12/03/2014 To: 25/03/2014

From: 12/03/2014 To: 25/03/2014

Actual Activity													
12/03/2014	13/03/2014	14/03/2014	15/03/2014	16/03/2014	17/03/2014	18/03/2014	19/03/2014	20/03/2014	21/03/2014	22/03/2014	23/03/2014	24/03/2014	25/03/2014
4	3	3	3	2	2	1	1	3	3	3	0	4	0
14	18	19	13	16	17	21	13	15	26	10	10	20	6
18	21	22	16	18	19	22	14	18	29	13	10	24	6

#### UHSM

Time of Admission	Plan Extra Per Day After NHDT	Since 28/11/13					Last 2 Weeks			Expected Activity													
		Last Year	Expected	This Year	Var. from Expected	% Var. from Expected	Last Year	Expected	This Year	12/03/2014	13/03/2014	14/03/2014	15/03/2014	16/03/2014	17/03/2014	18/03/2014	19/03/2014	20/03/2014	21/03/2014	22/03/2014	23/03/2014	24/03/2014	25/03/2014
2 Admissions 00:00 to 07:59	2	777	1011	967	-44	-4%	91	119	124	10	11	10	8	10	8	6	7	8	9	5	10	6	11
3 Admissions 08:00 to 23:59	2.2	2595	2852	3111	259	9%	355	386	419	34	21	28	36	22	23	40	19	28	25	30	24	22	31
<b>Total</b>	<b>4.2</b>	<b>3372</b>	<b>3863</b>	<b>4078</b>	<b>215</b>	<b>6%</b>	<b>446</b>	<b>505</b>	<b>543</b>	<b>44</b>	<b>32</b>	<b>38</b>	<b>44</b>	<b>32</b>	<b>31</b>	<b>46</b>	<b>26</b>	<b>36</b>	<b>34</b>	<b>35</b>	<b>34</b>	<b>28</b>	<b>42</b>

From: 12/03/2014 To: 25/03/2014

From: 12/03/2014 To: 25/03/2014

Actual Activity													
12/03/2014	13/03/2014	14/03/2014	15/03/2014	16/03/2014	17/03/2014	18/03/2014	19/03/2014	20/03/2014	21/03/2014	22/03/2014	23/03/2014	24/03/2014	25/03/2014
7	7	1	6	10	9	11	13	4	14	14	10	8	10
29	32	25	19	27	34	38	28	31	32	23	39	34	28
36	39	26	25	37	43	49	41	35	46	37	49	42	38

#### SRFT

Time of Admission	Plan Extra Per Day After NHDT	Since 28/11/13					Last 2 Weeks			Expected Activity													
		Last Year	Expected	This Year	Var. from Expected	% Var. from Expected	Last Year	Expected	This Year	12/03/2014	13/03/2014	14/03/2014	15/03/2014	16/03/2014	17/03/2014	18/03/2014	19/03/2014	20/03/2014	21/03/2014	22/03/2014	23/03/2014	24/03/2014	25/03/2014
2 Admissions 00:00 to 07:59	1.4	53	217	173	-44	-20%	1	21	23	1	1	1	1	2	1	1	1	1	1	1	1	1	1
3 Admissions 08:00 to 23:59	1.8	182	393	502	109	28%	22	47	68	3	3	3	2	2	6	7	4	2	4	5	2	5	
<b>Total</b>	<b>3.2</b>	<b>235</b>	<b>609</b>	<b>675</b>	<b>66</b>	<b>11%</b>	<b>23</b>	<b>68</b>	<b>91</b>	<b>4</b>	<b>4</b>	<b>4</b>	<b>3</b>	<b>4</b>	<b>3</b>	<b>7</b>	<b>8</b>	<b>5</b>	<b>3</b>	<b>5</b>	<b>6</b>	<b>3</b>	<b>6</b>

From: 12/03/2014 To: 25/03/2014

From: 12/03/2014 To: 25/03/2014

Actual Activity													
12/03/2014	13/03/2014	14/03/2014	15/03/2014	16/03/2014	17/03/2014	18/03/2014	19/03/2014	20/03/2014	21/03/2014	22/03/2014	23/03/2014	24/03/2014	25/03/2014
1	1	1	0	2	2	1	4	2	2	4	2	1	0
3	3	5	5	2	6	5	4	7	7	6	3	5	7
4	4	6	5	4	8	6	8	9	9	10	5	6	7

Plan = The additional number of patients forecast to attend A&E on a daily basis after NHDT changes take place (28/11/2013)

Expected activity = An estimate of expected activity + additional planned activity

Actual activity = Actual numbers attending A&E

Note: Until NHDT changes take place Expected Activity will be the same as Actual Activity